



**Circular  
Bio-based  
Europe**  
Joint Undertaking

# The European vision for Circular Economy in the Agri-Food sector

**Simone Maccaferri**

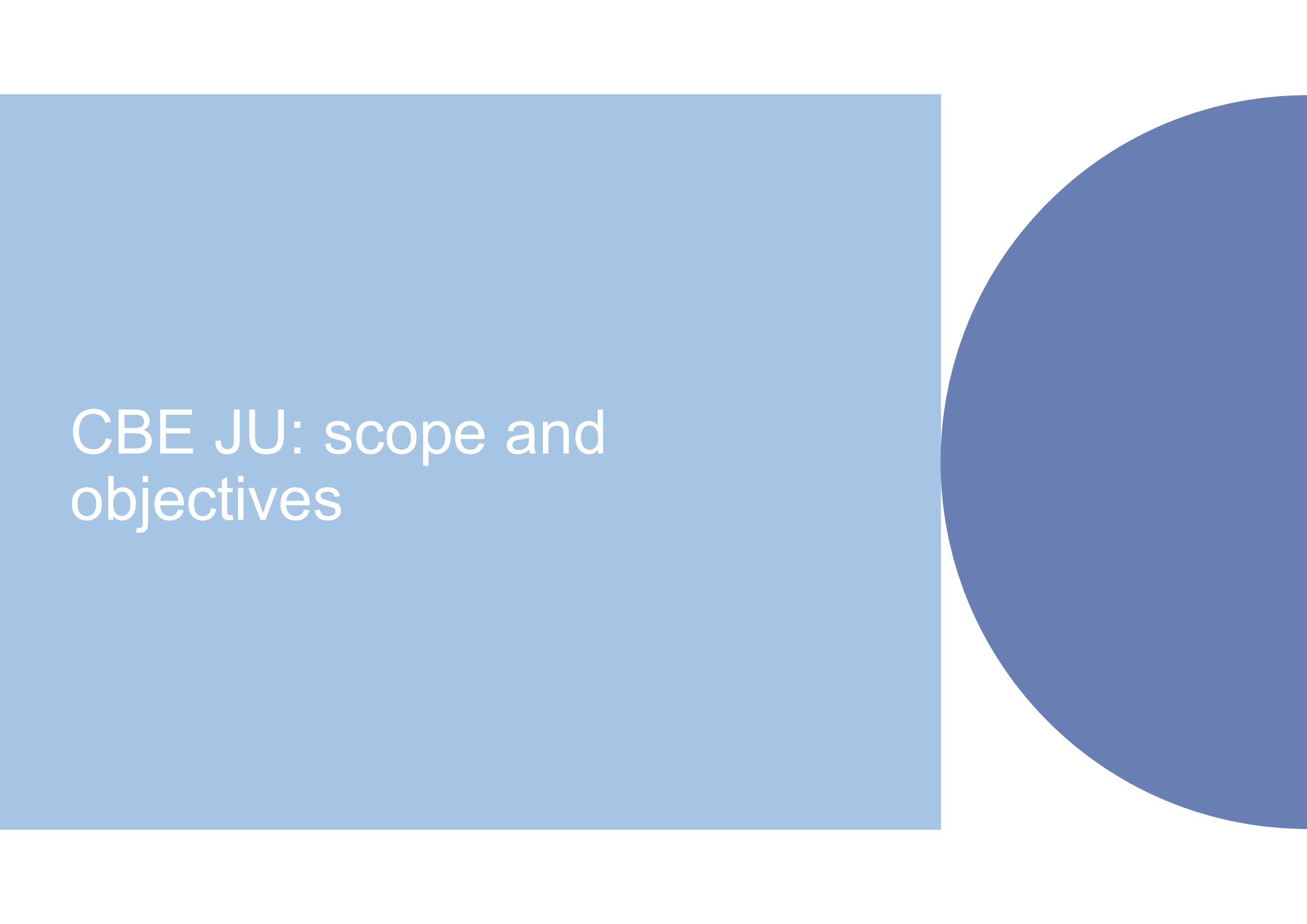
Project Officer

Brussels, 22 October 2024



Bio-based Industries  
Consortium

Co-funded by  
the European Union



# CBE JU: scope and objectives

## Circular Bio-based Europe Joint Undertaking

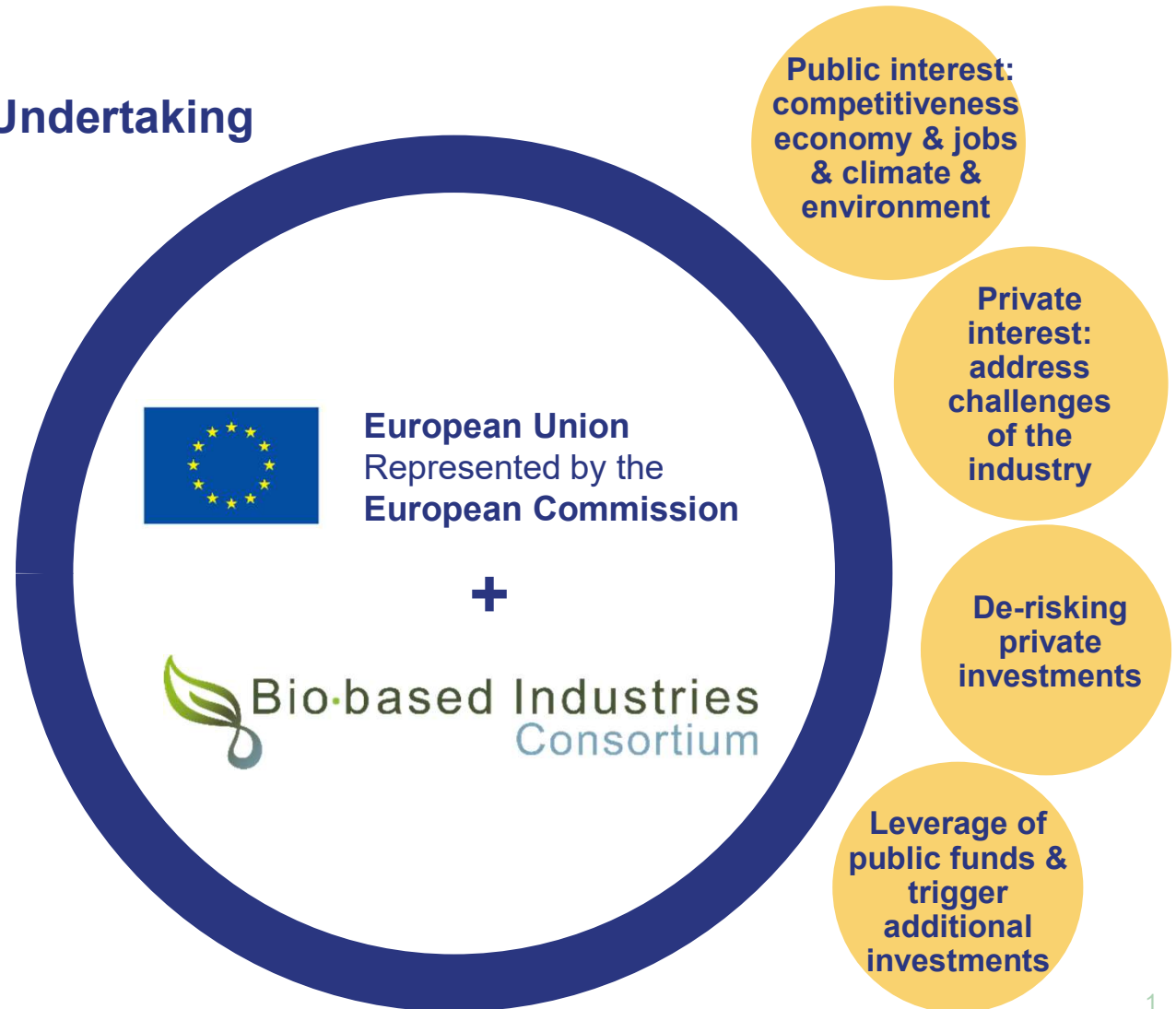


Co-funded by the European Union

Launched in 2021, operates until 2031

Successor of BBI JU (2014-2021)

**€2 billion public-private initiative**

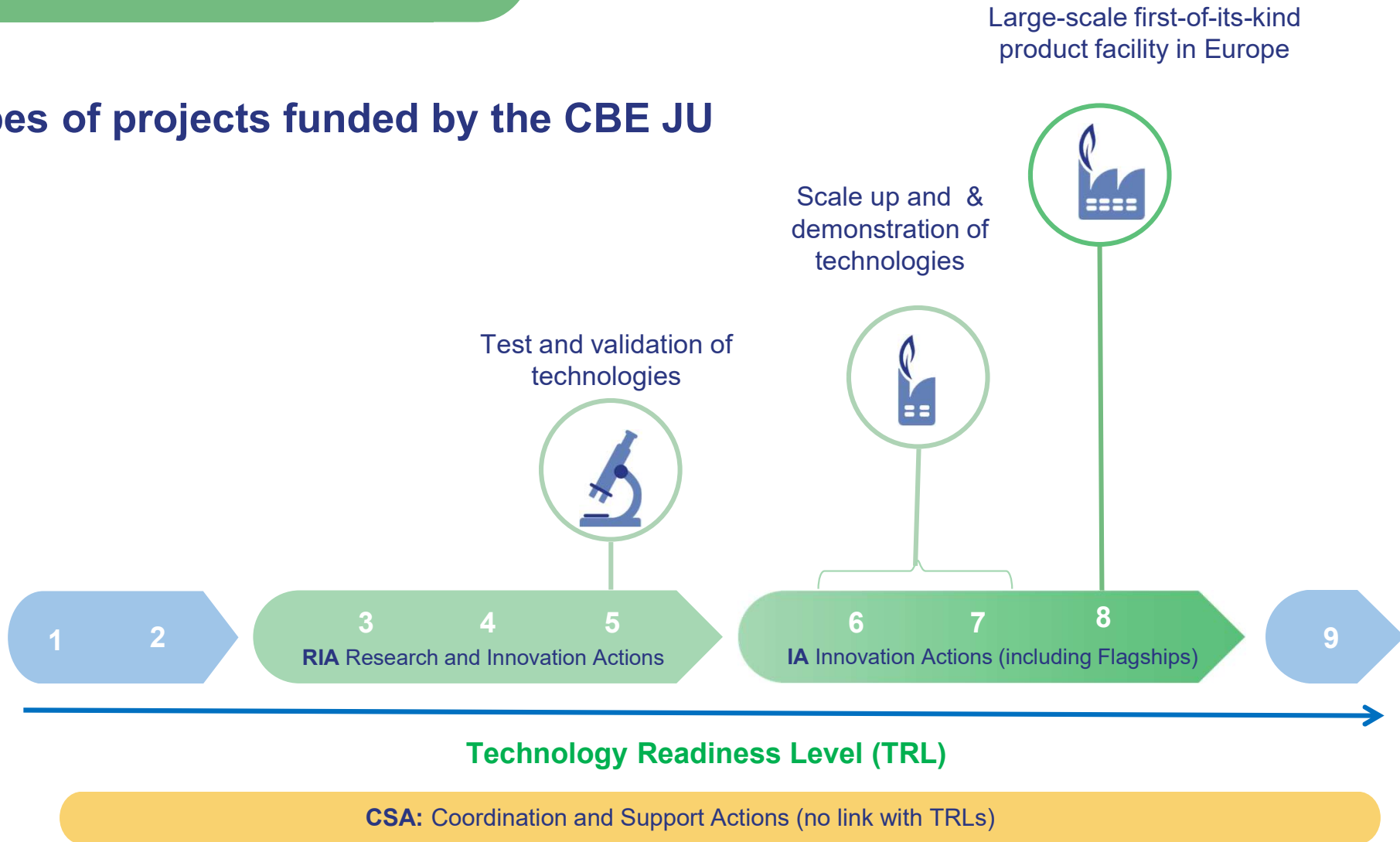


## CBE JU Strategic Research & Innovation Agenda

- Identifies the main **technological & innovation challenges** to be addressed in the circular bio-based economy
- Outlines the **research, demonstration & deployment activities** that CBE JU should support in the 2021-2031 period
- Co-drafted by the founding partners of CBE JU
- Basis for the multi-annual work plan of CBE JU → **Calls for proposals**



## Types of projects funded by the CBE JU



CBE JU is a central pillar in establishing Europe's bio-based sector as a global leader

192 projects

35% SMEs

1,550 beneficiaries

25% universities & research centres

For every euro of CBE JU funding the programme attracts €3.23 in private investment

from 43 countries

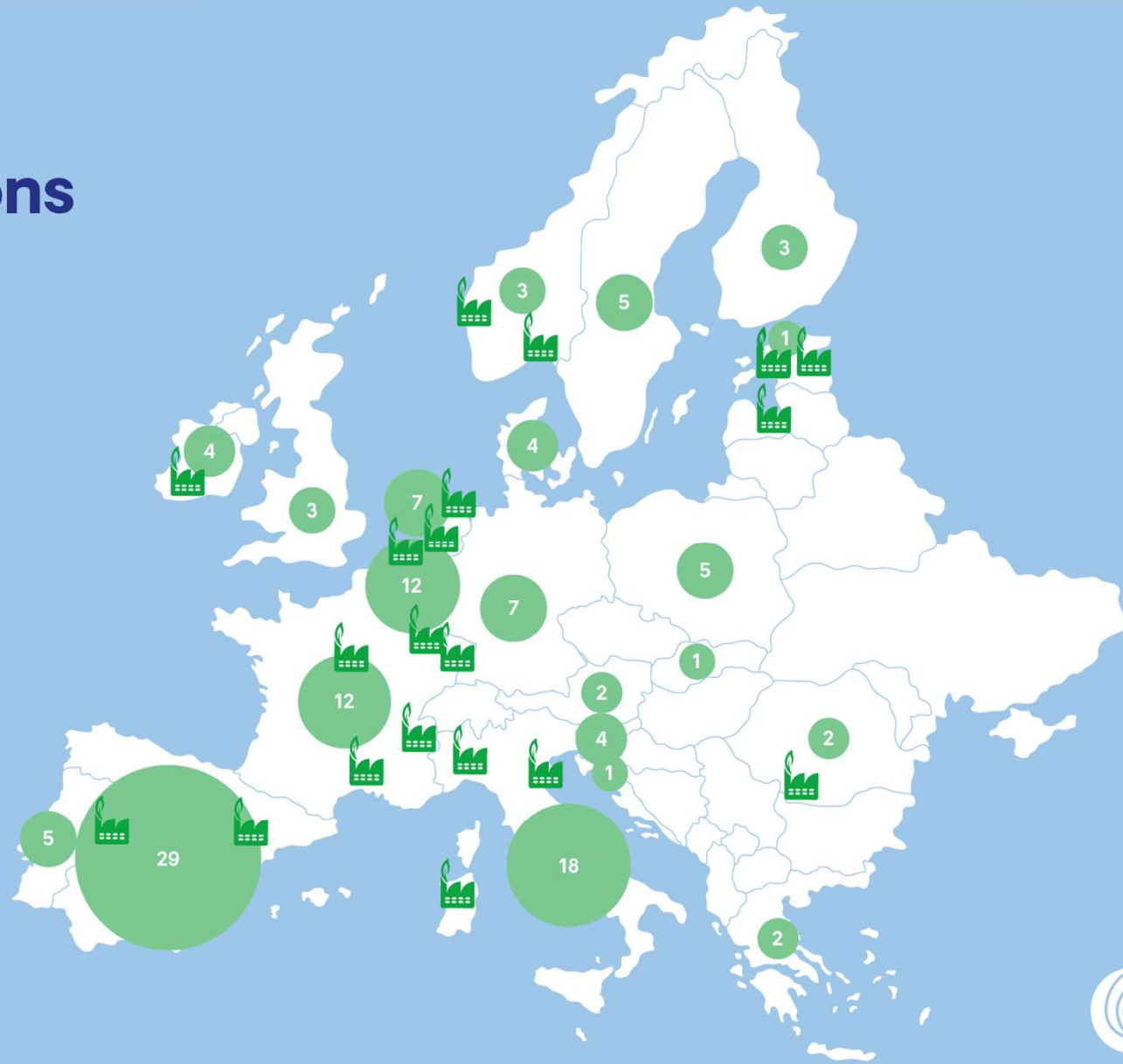


CBE JU's key highlights (May, 2024)



# CBE JU-funded Innovation Actions

-  Flagship biorefinery
-  Demonstration plants



# CBE JU flagship projects



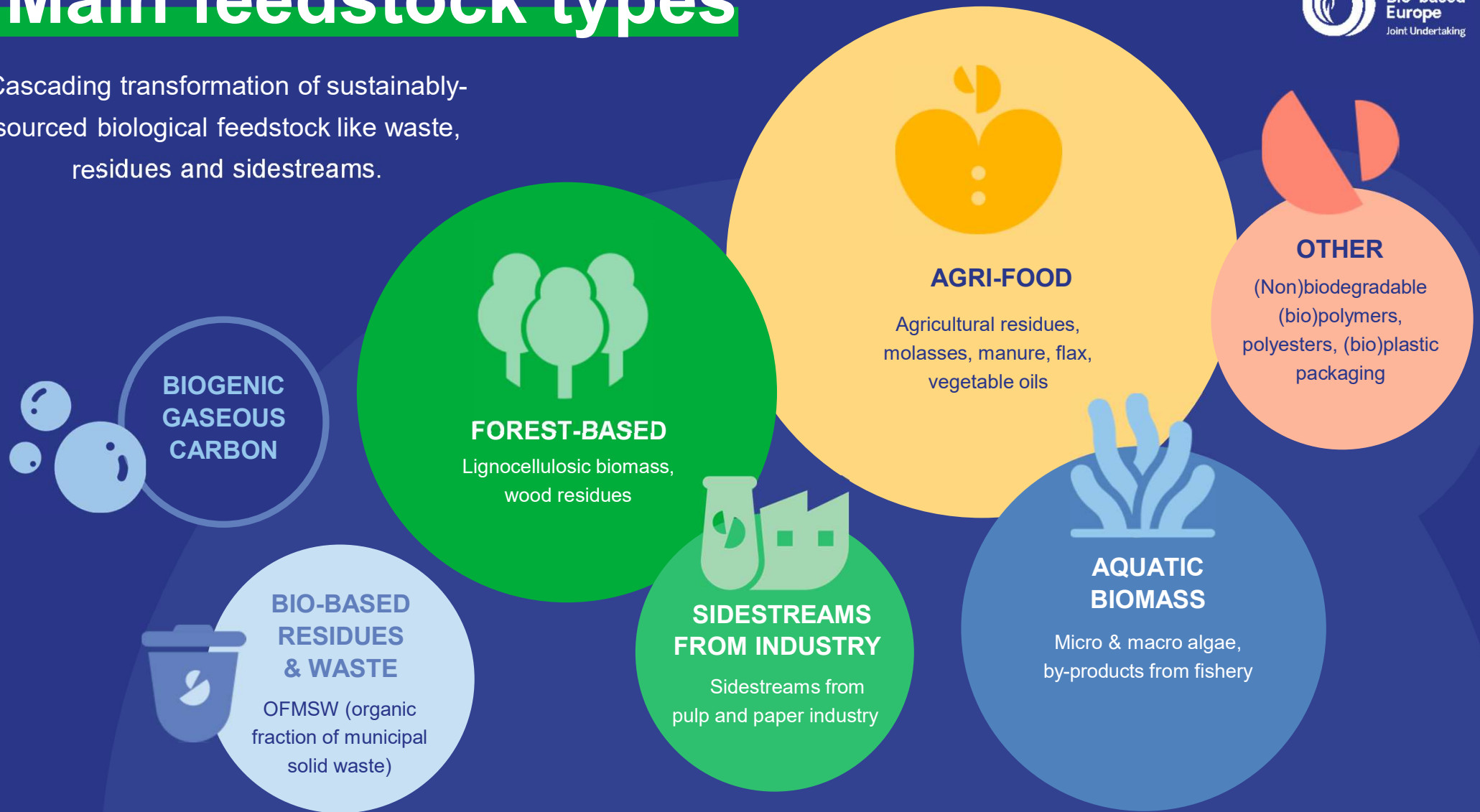
 Flagship biorefinery

- |   |   |
|---|---|
|  <b>1</b> <b>Avaldsnes</b><br>Norway             |  <b>2</b> <b>Sarpsborg</b><br>Norway                                 |
|  <b>3</b> <b>Imavere</b><br>Estonia              |  <b>4</b> <b>Imavere</b><br>Estonia                                  |
|  <b>5</b> <b>Riga</b><br>Latvia                  |  <b>6</b> <b>Co. Tipperary</b><br>Ireland                            |
|  <b>7</b> <b>Sas van Gent</b><br>The Netherlands |  <b>8</b> <b>Amsterdam</b><br>The Netherlands                        |
|  <b>9</b> <b>Delfzijl</b><br>The Netherlands     |  <b>10</b> <b>Amiens</b><br>France                                   |
|  <b>11</b> <b>Saint-Avoid</b><br>France          |  <b>12</b> <b>Saint-Avoid</b><br>France                              |
|  <b>13</b> <b>Hervás</b><br>Spain                |  <b>14</b> <b>Zaragoza &amp; Sesto San Giovanni</b><br>Spain & Italy |
|  <b>15</b> <b>Baillargues</b><br>France        |  <b>16</b> <b>Le Péage-de-Roussillon</b><br>France                 |
|  <b>17</b> <b>Porto Torres</b><br>Italy        |  <b>18</b> <b>Bottrighe</b><br>Italy                               |
|  <b>19</b> <b>Podari</b><br>Romania            |   |

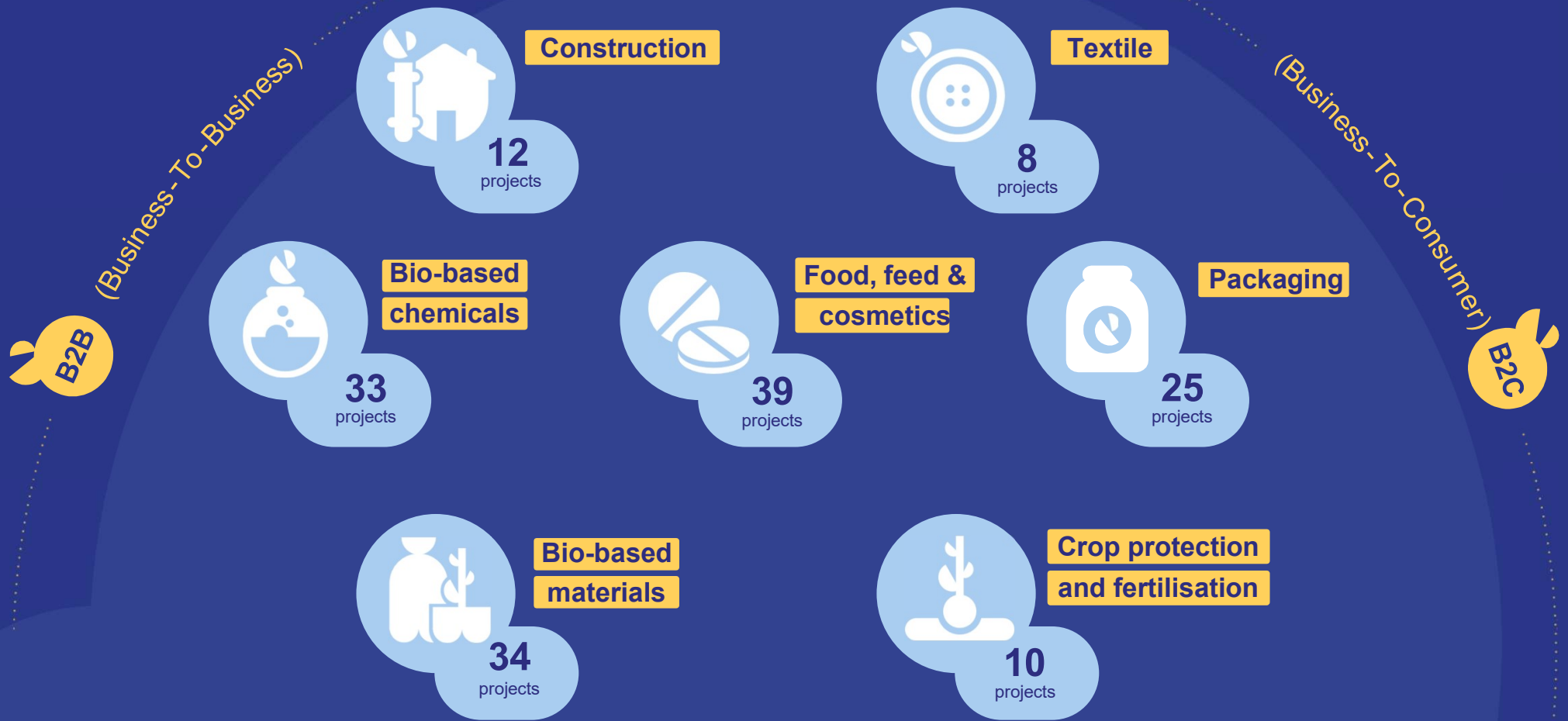



# Main feedstock types

Cascading transformation of sustainably-sourced biological feedstock like waste, residues and sidestreams.



# Areas of applications

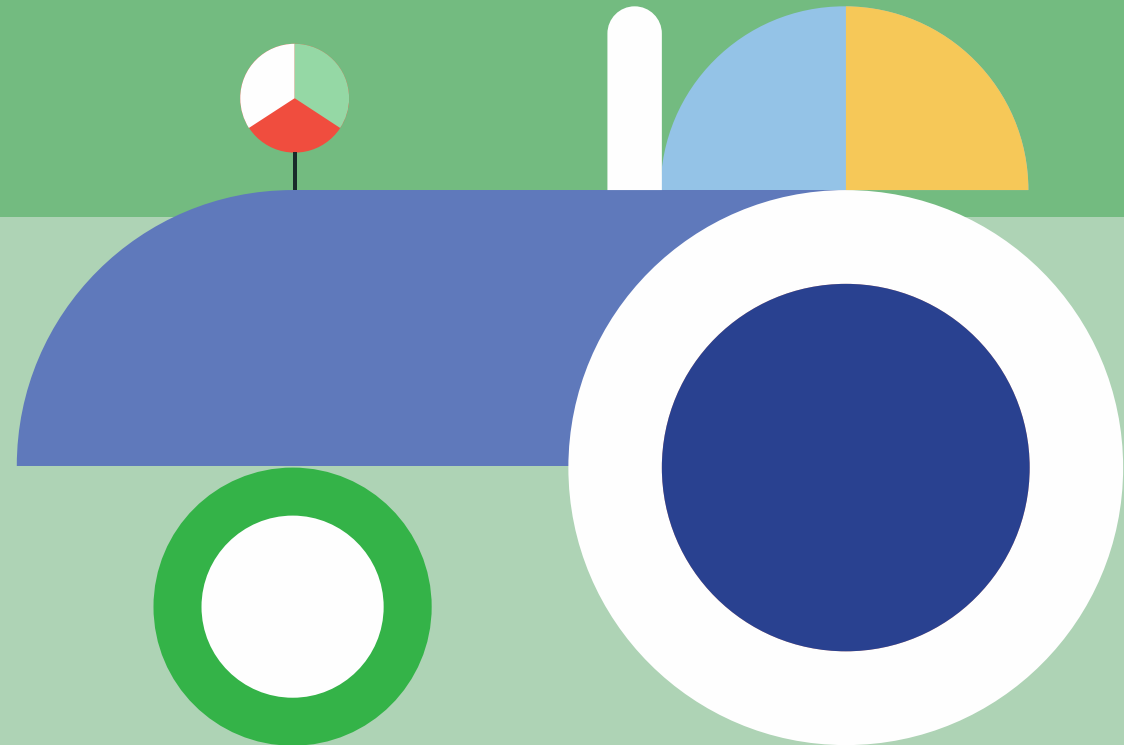




# CBE JU and the primary sector

## CBE JU strengthens and further empower the primary sector in the circular bio-based systems and value chains

- Secure a sustainable supply of biomass while at the same time creates value in rural areas delivering jobs, economic growth and development.

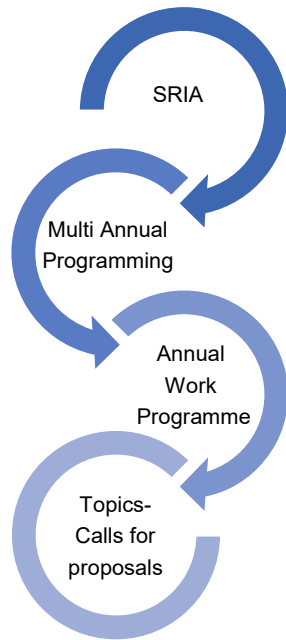


Council Regulation: mobilisation and integration of feedstock providers to cooperate in projects

Primary sector priority embedded in the programming framework

CBE JU Governance: **deployment group** on primary producers to advise the Governing Board


Monitoring of impact: specific KPI 1



KPI 1. Strategic participation and integration of feedstock producers and suppliers  
KPI 1.1 N of primary producers



## SRIA and priorities on primary producers



Enhancing  
their role in  
the circular  
bio-based  
systems

**Engage and integrate** primary producers in sustainable circular bio-based systems and value chains



Creating new  
opportunities  
for local  
actors

**Improve involvement** of primary producers in the value chains with the aim of ensuring high quality and quantity of feedstock, while they are rewarded with a proper share of the profit.

Revive and revitalise the rural, coastal and peripheral regions through inclusive involvement and **empowerment of local bioeconomy actors (including the primary sector)**



Increasing &  
improving  
participation  
in projects

Primary producers are **appropriately involved** in projects and are **represented** to the largest possible extent in the project **consortia**

Real and effective participation of the primary sector in the projects via the implementation of the **multi-actor approach (MAA)**, requested in <sup>10</sup> all the topics of interest for the primary sector.

## Multi-actor approach



Ensures genuine and sufficient involvement of a targeted **array of actors** throughout the whole course of the project



Researchers, farmers, foresters & fishers, aquaculture producers, relevant businesses, local communities, civil society & consumers, government representatives, etc.



**'Co-creation' process:** which key actors are relevant depends on the objective of the project proposal



**Results** in speeding up the acceptability and uptake of new ideas, approaches and solutions developed by project

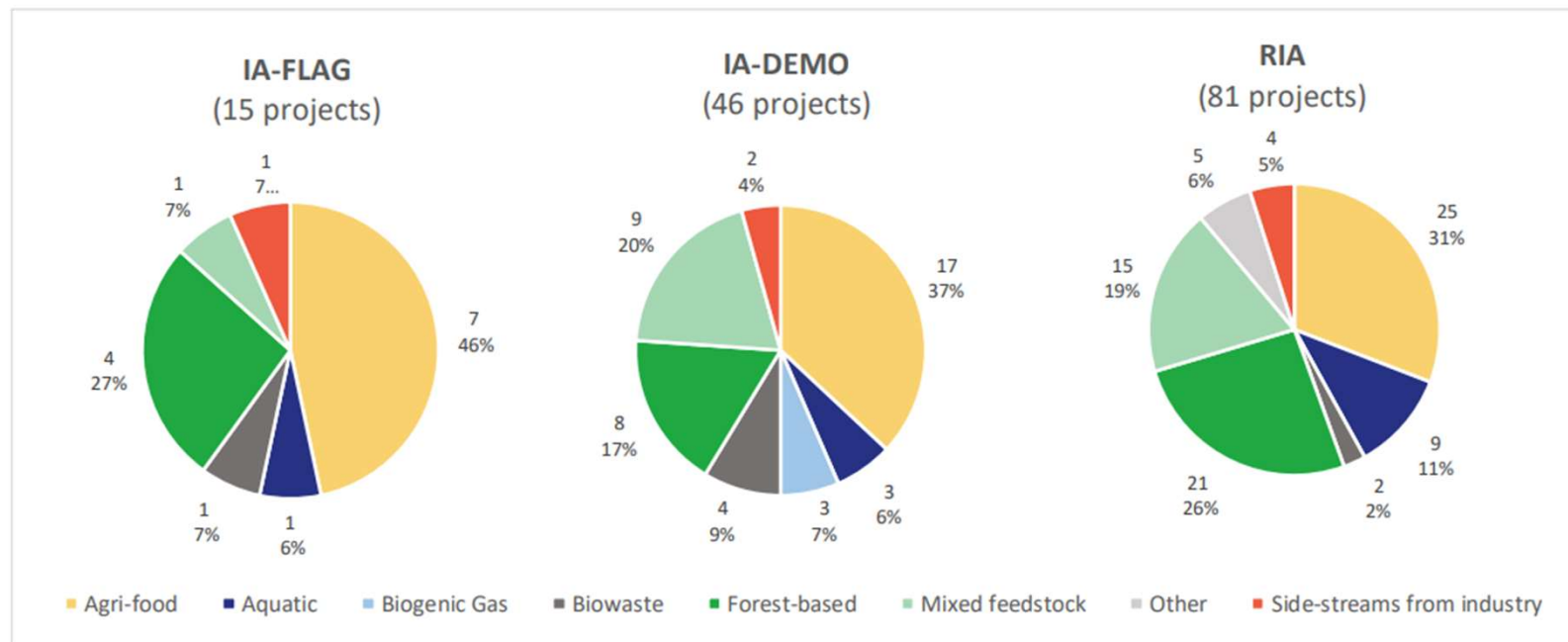
CBE KPIs: objectives and units of measurement			2031 targets
1	Strategic participation and integration of feedstock producers and suppliers towards large-scale valorisation of sustainable biomass	1.1 No of primary producers, involved as project beneficiaries and/or engaged in value chains at project level	100
		1.2 No of waste management actors, involved as project beneficiaries and/or engaged in value chains at project level	20

	CBE JU 2022	CBE JU 2023	CBE JU cumulative
Agri	15	36	51
Aqua	2	4	6
Forestry	7	6	13
<b>Total</b>	<b>24</b>	<b>46</b>	<b>70</b>



€7.46 millions of CBE JU funding

## Main source of feedstock



# The future policy scenario



### Conclusions on the opportunities of the bioeconomy in the light of current challenges with special emphasis on rural areas



“

The bioeconomy carries clear potential for addressing the challenges facing the EU today, including climate change, fossil-fuel dependency and food security. Promoting the bioeconomy in rural areas is a priority for Sweden, in particular given the opportunities it presents for job creation and encouraging rural regeneration.

— Peter Kullgren, Swedish Minister for Rural Affairs

## Council Conclusions (Swedish Presidency) April 2023

### Conclusions on the opportunities of the bioeconomy in the light of current challenges with special emphasis on rural areas

- *NOTES the risk of an emerging **biomass availability gap** and **ACKNOWLEDGES** the role of **national and regional strategies for sustainable biomass**.*
- ***EMPHASISES** the role of bioeconomy for vibrant rural areas, for **mobilising primary producers** in climate action and in the green transition, and for creating and maintaining jobs, growth, and equal opportunities across the whole of the EU and its regions.*
- ***STRESSES** the importance of **sustainable solutions in rural areas and of ensuring enhanced and diversified incomes in the bioeconomy sectors for primary producers**, landowners, small and medium sized enterprises, and other rural actors, including through new value-added chains and business models in which these producers are fully integrated.*

## Strategic Dialogue on the Future of Agriculture 2024

“The bioeconomy should be of central importance in combatting climate change, safeguarding ecosystem resilience, and delivering to restore nature.”

“Strong public-private partnerships in which rural actors actively participate can help turn niche into norm to support the development and implementation of bioeconomy initiatives. Collaboration between public and private sectors is necessary”

**Recognition**



**Implementation**



**Circular  
Bio-based  
Europe**  
Joint Undertaking

Contact us

[info@cbe.europa.eu](mailto:info@cbe.europa.eu)  
[www.cbe.europa.eu](http://www.cbe.europa.eu)

Follow us



Subscribe



 Bio-based Industries  
Consortium

 Co-funded by  
the European Union